

Dixie Pixie Dixieland Band

Trombone advanced
(Part 4)

Ivo Kouwenhoven

Swing! 

Hand claps

Musical notation for the bass line of 'The Rose Tree'. The key signature is one sharp (F#). The melody consists of eighth and quarter notes with rests. A forte (*f*) dynamic marking is present at the end of the line.

10

Musical notation for Exercise 10, bass clef, key of D major. The melody consists of: D2 (half), E2 (quarter), F#2 (quarter), G2 (quarter), A2 (half), B2 (quarter), C#3 (quarter), D3 (half). The accompaniment consists of: D2 (half), E2 (quarter), F#2 (quarter), G2 (quarter), A2 (half), B2 (quarter), C#3 (quarter), D3 (half).

A

mf

[illegible]

24

1. 2.

B

37



44



Zing (solo of tutti)



54

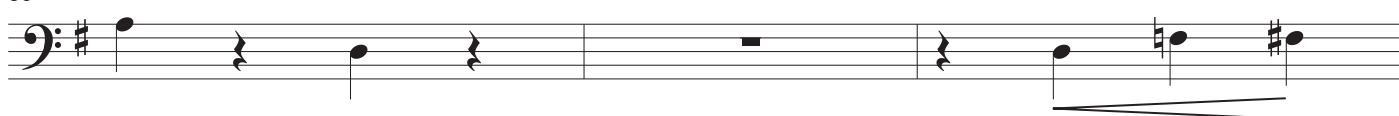


59



roepen (tutti)

63



D



73



80

