

Symfonie nr. 40

Bassoon 2 in G

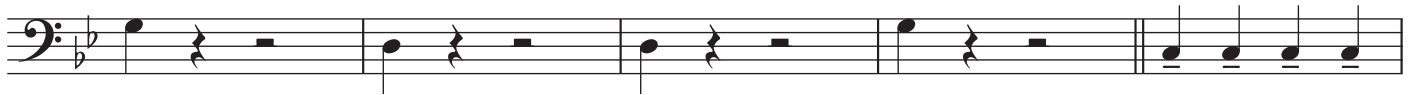
Wolfgang Amadeus Mozart
arr: Michiel van Vliet

Allegro molto



6

(A)



11



15

(B)



20

(C)



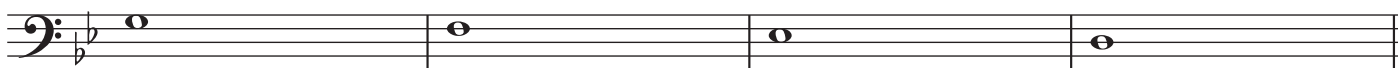
25

(D)



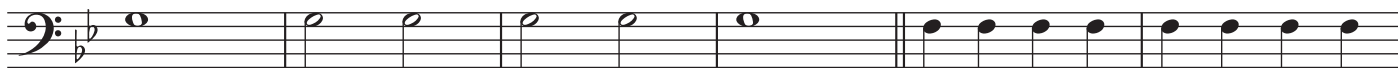
Symfonie nr. 40 – Bassoon 2 in G

30



(E)

(F)



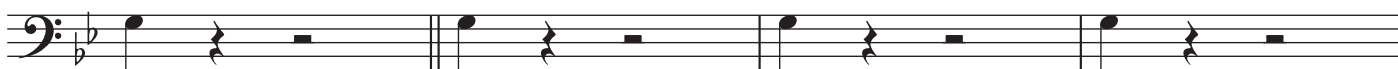
(G)

40



(H)

(I)



49



(J)

(K)



58

